

DOOR HARDWARE

Hardware for use on cabinet side panels and solid doors, and for use on wire doors.

RPC offers wood door hardware to match the mounting configuration also used on wire door cabinet designs such as the 2107 hinge and cabinet door hasps shown here.



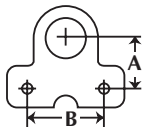
2101

Part Number: 2101 Wood Door Label Holder

Size: 3-3/16" wide x 1-1/2" high
Specify finish when ordering



2102

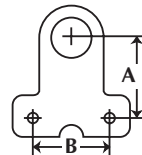


Part Number: 2102 Inset Cabinet Hasp

Height (A): 63/64" (25mm)
Distance Between Holes (B): 1-37/64" (40mm)
Specify finish when ordering



2103

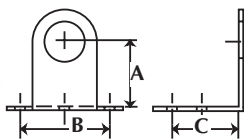


Part Number: 2103 Onset Cabinet Hasp

Height (A): 1-21/32" (42mm)
Distance Between Holes (B): 1-37/64" (40mm)
Specify finish when ordering



2104

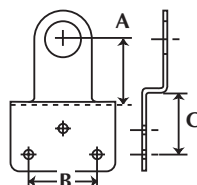


Part Number: 2104 Onset Solid Door Hasp

Height (A): 1-17/32" (34mm)
Distance Between Holes (B): 1-37/64" (40mm)
Mounting Hole Location (C): 1-1/2" (38.2mm)
Specify finish when ordering



2105



Part Number: 2105 Cabinet Hasp For Overlay Solid Doors

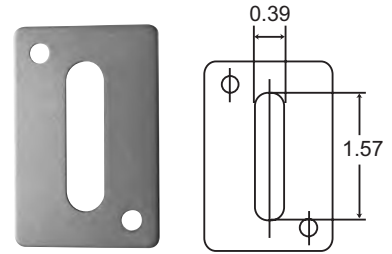
Height (A): 1-1/2" (38.2mm)
Distance Between Holes (B): 1-37/64" (40mm)
Mounting Hole Location (C): 1" (25.4mm)
Overlay: 35/64" (14mm)
Specify finish when ordering



DOOR HARDWARE

Part Number: 2106 Door Plate

Size: 1-37/64" (40mm) x 2-23/64" (60mm)
Vertical Slot: 10mm x 40mm
Specify finish when ordering



2106

Part Number: 2107 Flush Mount Hinge

Door Thickness: 13/16" (20.6mm)
Door Clearance: 1/4" (6.4mm)
Cabinet Wing Length: 2-3/16" (55.6mm)
Barrel Height: 2-3/4" (69.9mm)
Gauge: .095" (2.4mm)
Specify finish when ordering



2107

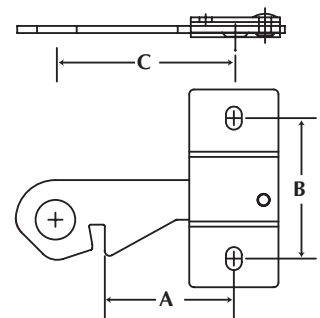


2802-26B
Left Hand
Cabinet Latch

2801-26B
Right Hand
Cabinet Latch

Part Numbers: 2801-26B, 2802-26B Right Hand Cabinet Latch – 2801-26B (for doors hinged on LH side) Left Hand Cabinet Latch – 2802-26B (for doors hinged on RH side)

Height (A): 1-5/8" (41.3mm)
Distance Between Holes (B): 1-25/32" (45mm)
Mounting Hole Location (C): 2-1/4" (57.2mm)
Available bright chrome plated only

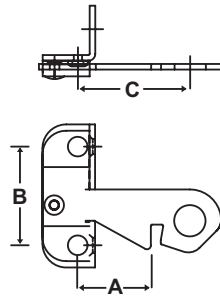


2801-26B
(symmetrically opposite)

2802-26B
(shown)



2804-26B



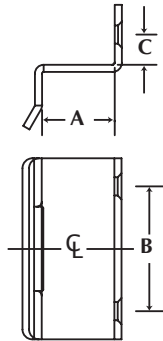
Part Numbers: 2804-26B
Double Solid Door Latch

Height (A): 3/4" (19.1mm)
 Distance Between Holes (B): 1-37/64" (40mm)
 Mounting Hole Location (C): 1/2" (12.7mm)

Available bright chrome plated only



2813-26B
 Solid Door Strike



Part Number: 2813-26B

Solid Door Strike Plate

Height (A): 29/32" (23mm)
 Distance Between Holes (B): 1-37/64" (40mm)
 Mounting Hole Location (C): 21/64" (8.4mm)
 Pack: 100/case

Available bright chrome plated only



2814-26B

Part Number: 2814-26B
Thru Door Strike Plate for 13/16" Doors

Dimension: 2-3/8" (60mm) x 1-9/16" (40mm)
 Distance Between Holes: 1-37/64" (40mm)
 Mounting Hole Location: 1-1/16" (27mm)
 Pack: 100/case

Available bright chrome plated only

